



**FUCHS**  
*Fördertechnik AG*

# Your Crane Specialist

**High Performance • Advanced Technology • Latest Design**



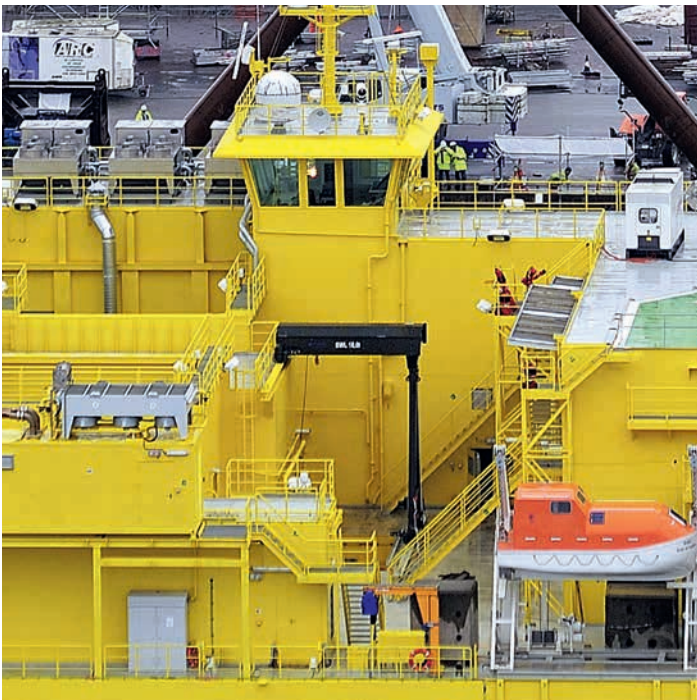
**We supply customized  
material handling solutions.**

**Worldwide.**





**„We manufacture specialised material handling solutions for every kind of working environment including Marine / Offshore applications“**



## Table of Contents

	Company Profile	3
	Engine Room Cranes	5
	Travelling Trolleys	6
	Provision Cranes	7
	Telescopic Cranes	8
	Offshore	9
	Special Systems	10
	Yachts	11
	Contact	12





## Company Profile

Flexibility and a disposition for innovation, continual development and enhancement of technological know-how are essential for success. FUCHS *Fördertechnik* AG looks back on a history of over 50 years of commitment to just these ideals. Today, we are a universally acknowledged specialist for individual material handling solutions focussing on the manufacture of cranes for every kind of working environment including Marine / Offshore applications.



### WORLD WIDE OPERATION

Our special know-how has made us market leader in the business. It also makes us a reliable partner for the future.

Clients in Marine & Offshore and Heavy Duty Industries all over the world trust and rely upon FUCHS *Fördertechnik* AG.

*View of office buildings from the patio*



### INNOVATION AND EXPERIENCE

Founded in 1962 as a commercial agency, FUCHS *Fördertechnik* AG rapidly developed to become an independent workshop producing a versatile range of material handling equipment, whereby flexibility soon became a main aspect.

*Front view of the new factory workshop*

The company grew with the requirements and the increasingly specialised tasks demanded in particular by the shipbuilding industry soon led to innovative designs and custom built Engine Room Cranes and Travelling Trolleys - built to fulfil customers' requirements and adapted to the particular operating conditions in every way.



## Company Profile

### FULL SERVICE BACK-UP

All systems and equipment are produced to pre-finished quality in our own factory in Oststeinbek, which lies close to Hamburg. Both air- and seaport can be reached within 30 min by car. At all times during a project experienced engineers provide assistance and advise our customers in every issue of design and construction, delivery and installation - to make sure that every detail is perfect.

Professional servicing and back-up round off the range of services offered.

### TOP QUALITY BY ALL STANDARDS

Maximum quality of the finished product is assured by our DNV certified Quality-Management-System in accord with DIN EN ISO 9001 and the individual tests carried out by the nominated classification society e.g. / ABS, BV, CCS, DNV, GL, KR, LR, RINA and national flag authorities such as CSA, SBG, USCG etc. chosen by the client.



*Stewing Jib Crane  
SWL 2.0t  
Class DNV*



*Engine Room Crane  
SWL 2.5t  
Class LR*



## Engine Room Cranes



Double Jib Crane  
SWL 2 x 6,3t  
Class DNV



Engine Room Crane  
SWL 12.5t  
Class LR

### MARKET LEADER'S EFFICIENCY

One of the main tasks to be solved when designing engine room- and pump room cranes is the efficient utilisation of the often very limited space onboard.

FUCHS *Fördertechnik* AG provides the required special designs with low headroom and optimised hook approach to suit the individual conditions.

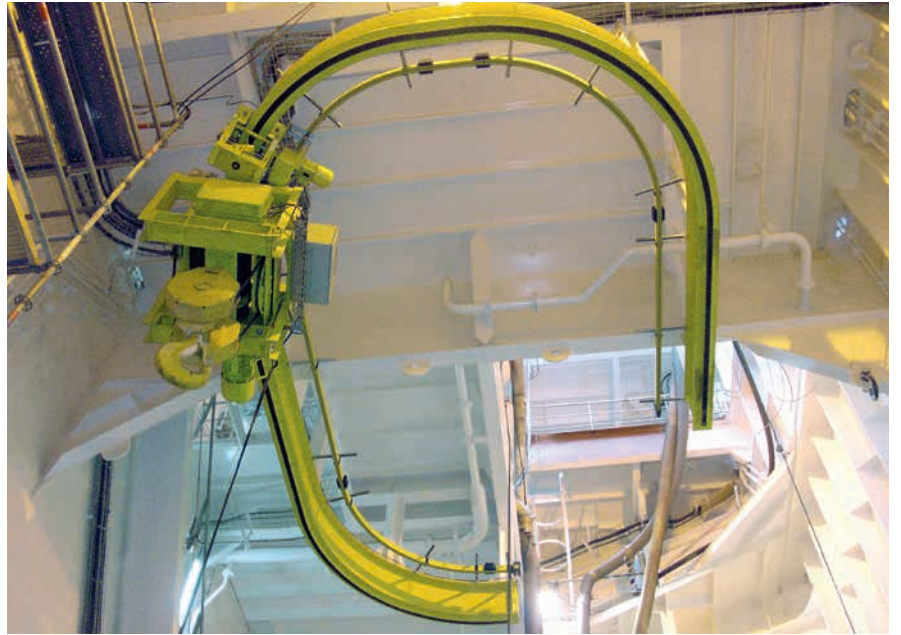
In this field FUCHS *Fördertechnik* AG is the undisputed market leader. These strong cranes are available in load capacities of more than 30t.



## Travelling Trolleys

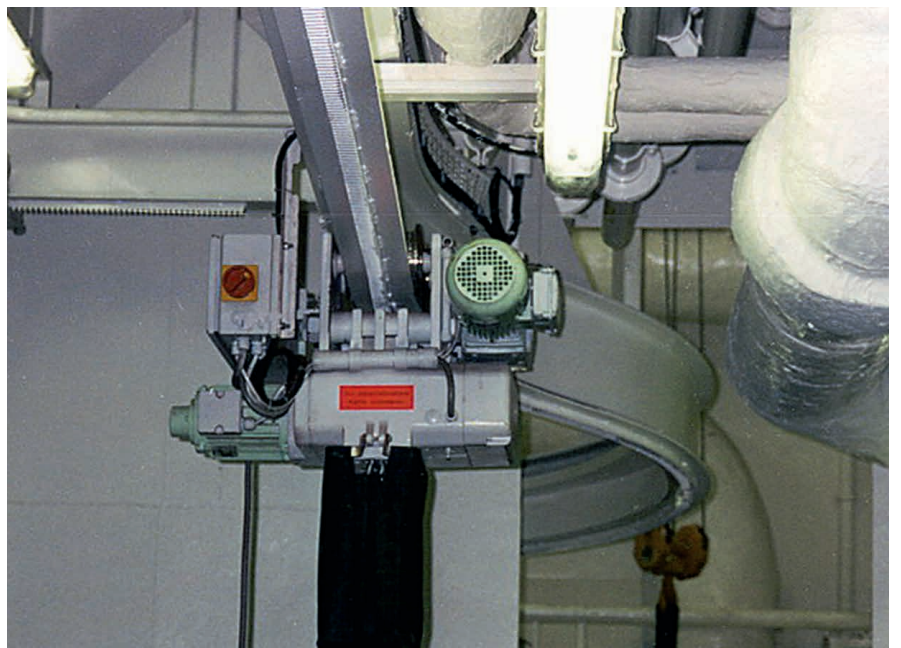
### COMPACT PERFECTION

One of our special subjects is the design and development of technically perfected Monorail Trolleys and Radius-going Trolleys, which are ideally adapted to the given layout and spatial conditions. Our Trolleys with load capacities up to 5t are equipped with rack and pinion drive and achieve a track radius of less than 1000mm.



SWL 25.0t  
Radius 1800mm  
Class BV

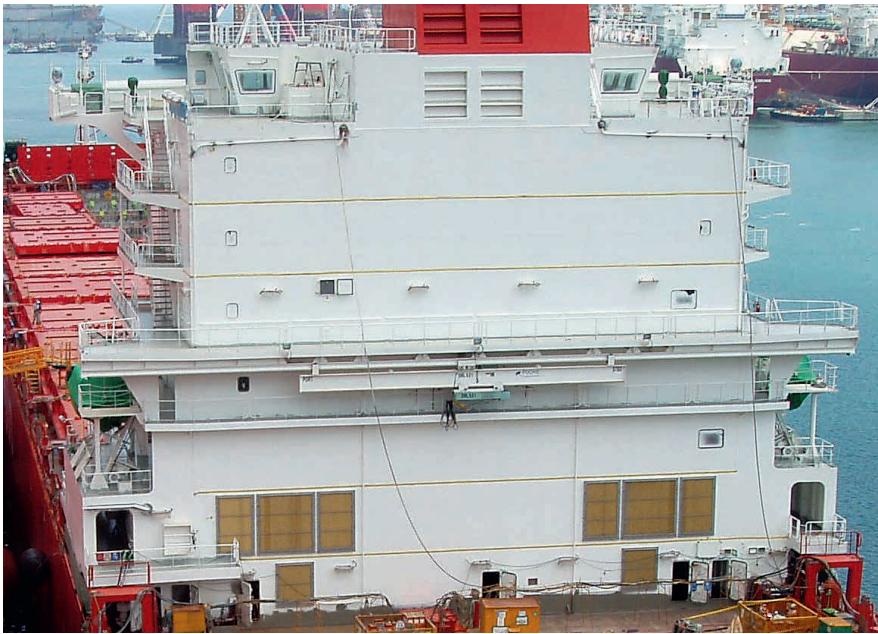
For loads of 25t a radius of 1800mm is reached. Naturally, load capacities of more than 25t are also available.



SWL 5.0t  
Radius 2250mm  
Class RINA



## Provision Cranes



SWL 6.3t  
Class GL  
Outreach 5000mm



SWL 12.5t  
Class GL  
Outreach 5000mm

### PROVISIONS AND MORE

Lifting provisions onboard is only one of many possible applications for our reliable Monorail Systems e.g. trouble-free handling of spare parts and general cargo – our cranes are suitable to any kind of load or ship.

With an outreach of 7500mm, load capacities of up to 13t are possible. Many technical solutions are available such as frequency controlled travelling systems, wireless remote control, floodlights and high travel speeds without load for maximum utilization.

### Heavyweight Champions

These sturdy provision cranes guarantee a long service life and high durability. Regardless of wind and weather conditions.

Equipped with a platform along the whole length of the crane, easy and safe access is provided for.

Remote control is an option for easy handling.

### Ready, Steady, Go!

Provisions must be taken aboard within the often very tight schedules of calls at port.

Our cranes are built to be 100% reliable.

Fast hoisting speeds and frequency control for dynamic operation make sure that everything runs smoothly and without delay.



## Telescopic Cranes

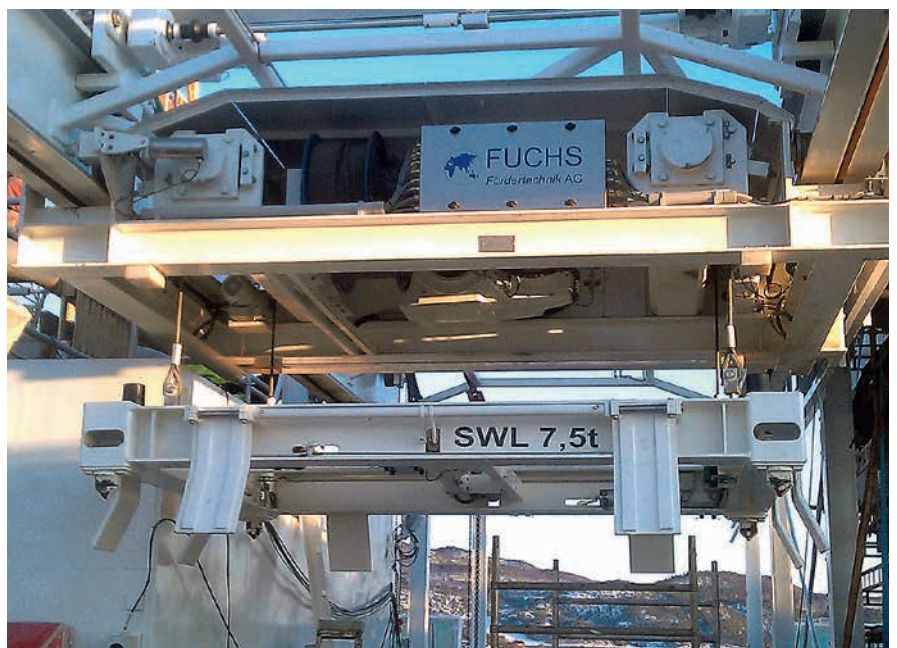
### HIGH PRECISION IN OPERATION

Wherever loads have to be moved with safety and precision, our strong cranes are the ideal means – applications possible on ships include, amongst others, the handling of spare parts, baggage, ash containers or hose-handling. At present, systems with an SWL of up to 40t are available.



*Tender Boat Crane  
SWL 8,5t + 1,2t  
Class DNV*

The individual design guarantees an optimal solution for the application in question.



*Container Crane  
SWL 7,5t  
Class DNV  
Outreach 5765 mm*





# Offshore



*Deck Gantry Crane  
SWL 5.0t  
Class BV  
Span 15.5m*



*ROV Hangar Crane  
SWL 2x 25t  
Class DNV*

## Heavy Duty Offshore Solutions

Strong environmental influence of saltwater, deep temperature, high humidity, ice and vibrations are the enemy of every mechanical construction. Special coating and design features of FUCHS product systems realise a long life cycle. Derailing and automatic locking devices with strong drive systems support the workman in the heaviest weather conditions to work effective and safe.

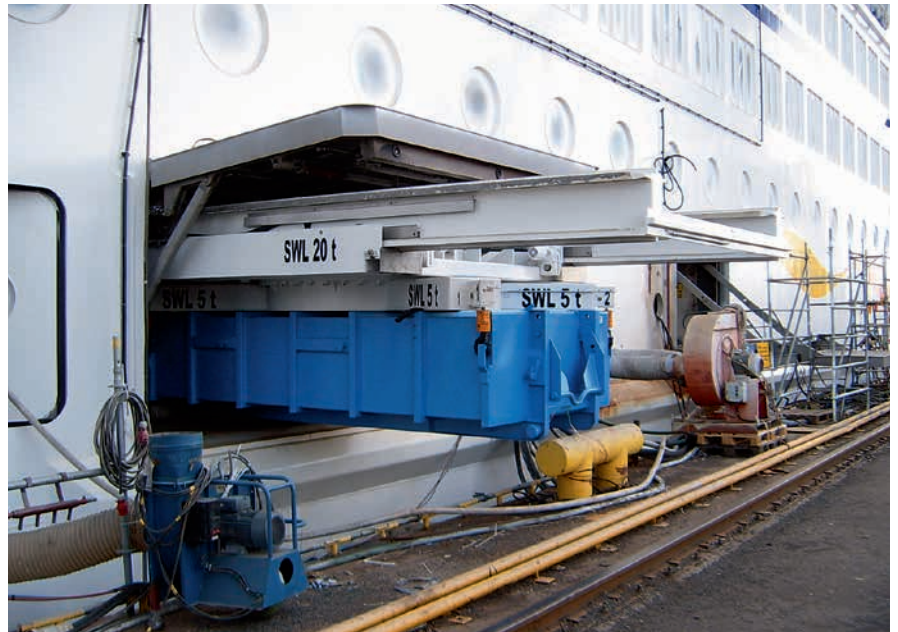


## Special Systems

### SYSTEM-ORIENTED SOLUTIONS

In the field of special ship design we accept every challenge. Our innovative solutions installed on numerous yachts and marine crafts clearly demonstrate our abilities - e.g. helicopter service cranes, special cranes for handling of ammunition, torpedoes and fire walls. The same applies for the offshore industry, where we have gained a world wide reputation with highly specialised cranes and trolleys.

Before delivery all our products are tried and tested thoroughly (FAT -Factory Acceptance Test) in the presence of the appointed classification society.



*Garbage Container Crane  
SWL 20t  
Class DNV*



*Slewing Jib Crane  
SWL 21t  
Outreach 3675 mm  
Class BV*



## Yachts



*Electric Tender Boat Crane*  
SWL Fwd 2 x 2.5t / Aft 4 x 2.0t  
Outreach 3950mm over both ship sides  
Class LR



*Hydraulic Rescue Boat Crane*  
SWL 2.0t  
Outreach 6500mm  
Class GL / LR

### SPECIAL DESIGN IN SERIES INDIVIDUAL DESIGN IS OUR STANDARD

To meet the special demands and difficult design conditions of this very sophisticated ship type, a high degree of individuality, quality and design is required. In order to satisfy every special request, we are continually designing and producing new and improved cranes and creating solutions for the handling of tender boats, jet skis, for servicing the main engine or even for a helicopter hangar to name just a few possible applications.

### ENGINEERING EXCELLENCE ON DEMAND

From the very beginning, the customer is a valuable part of the team and is closely involved in all production stages. In that way, satisfaction of customers' demands is guaranteed. The frequently complex requirements are met by our experienced team of engineers and technical designers. Each new crane is tested extensively to ensure highest quality and safety standards.



**FUCHS**  
*Fördertechnik AG*

# Take Advantage of our Experience

**FUCHS *Fördertechnik AG***

Am Knick 18  
22113 Oststeinbek  
Germany

Tel.: +49 40 7 100 10 0  
Fax: +49 40 7 100 10 99

eMail: [info@fuchs-cranes.de](mailto:info@fuchs-cranes.de)  
[www.fuchs-cranes.de](http://www.fuchs-cranes.de)

**Your contacts at FUCHS *Fördertechnik AG*:**

Cranes

Mr Peter Pfabe  
eMail: [sales@fuchs-cranes.de](mailto:sales@fuchs-cranes.de)

Services  
and Spare parts

eMail: [service@fuchs-cranes.de](mailto:service@fuchs-cranes.de)

